

# THE WHERRYMAN'S WAY

*A Guide to Norfolk's Long Distance Footpath  
including 12 additional circular walks en-route*

Steve Silk

For centuries the distinctive black sail of the wherry was a common sight along the River Yare. These magnificent craft plied their trade from Norwich to Great Yarmouth, transporting everything from coal and timber to market produce, ice and thatching reed. While the wherry survives today only in a handful of restored vessels the river remains, as do the staithes, the dykes and many of the wayside pubs once frequented by the wherryman. Once you start looking, their ghosts are everywhere.

In 2005, the 35-mile long Wherryman's Way was unveiled, opening up the riverside footpaths to a new generation of walkers. In this book the author has taken a step further, not only covering the main route but providing an opportunity for individuals, families and walking groups to explore the heritage of the Wherryman's Way by providing guides to the twelve circular walks which branch off from it.

The book is illuminated with photographs and stories relating to features connected with the route, from abandoned windmills to long-forgotten ferries, and eccentric characters such as Billy Bluelight and the irascible wildfowler known as 'Old Scientific'. This book is a must for anyone who loves what the wherryman themselves called 'The Norwich River'.



## ABOUT THE AUTHOR

Steve Silk is an assistant editor for the BBC, working on its Look East news programme based in Norwich. He lives in Loddon, half way along the Wherryman's Way, with his wife Debbie and their two daughters Abbie and Maya.

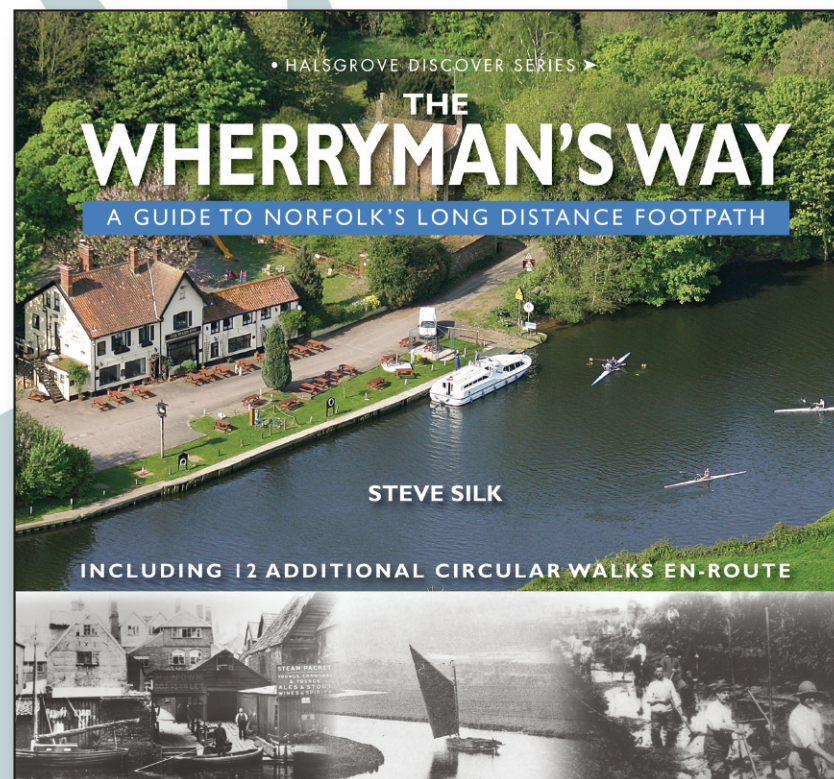
## HALSGROVE CATALOGUE

The full Halsgrove catalogue  
is available free or visit  
[www.halsgrove.com](http://www.halsgrove.com)  
for regional and category  
listings of available titles.

Trade sales:  
Sue Rhodes-Thompson –  
DDI 01823 653770 [suet@halsgrove.com](mailto:suet@halsgrove.com)

Halsgrove Publishing  
Halsgrove House,  
Ryelands Industrial Estate,  
Bagley Road, Wellington,  
Somerset TA21 9PZ  
Tel: 01823 653777  
Fax: 01823 216796  
[www.halsgrove.com](http://www.halsgrove.com)  
e-mail: [sales@halsgrove.com](mailto:sales@halsgrove.com)

## HALSGROVE TITLE INFORMATION



**Format:** Hardback, 144 pages, 214x230mm  
with 120 colour photographs  
**Price:** £14.99  
**ISBN:** 978 1 84114 852 6  
**Imprint:** Halsgrove  
**Published:** May 2010



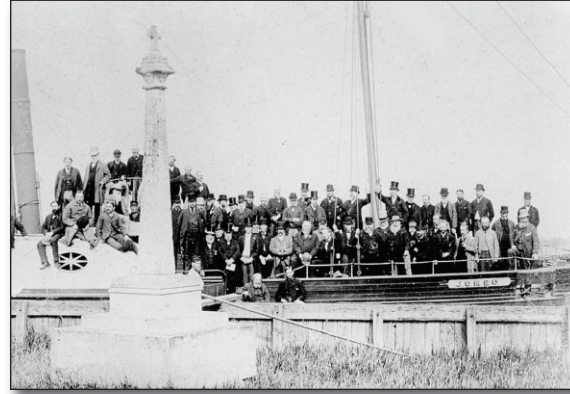
# Great Books from your Local Bookseller



# THE WHERRYMAN'S WAY



The walk is well sign-posted.



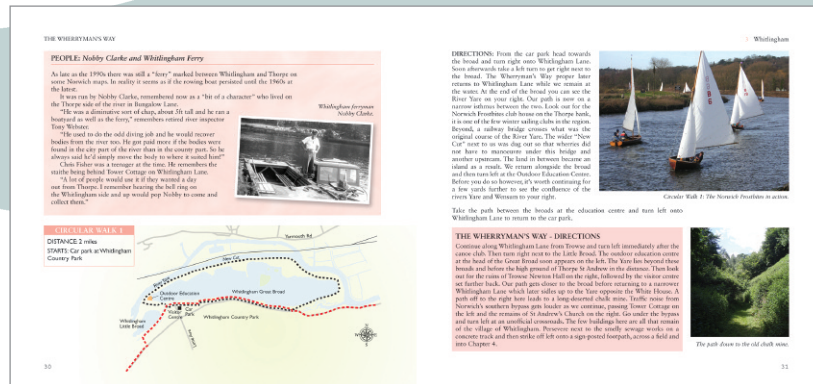
The great and the good at Hardley Cross in the 1880s.



Right: Dawn on the Chet near Norton Marsh Mill.



An actor dressed as Billy Bluelight goes racing as the Wherryman's Way is officially opened in 2005.



Example of a double-page spread.



The Beauchamp Arms from the Buckenham bank.